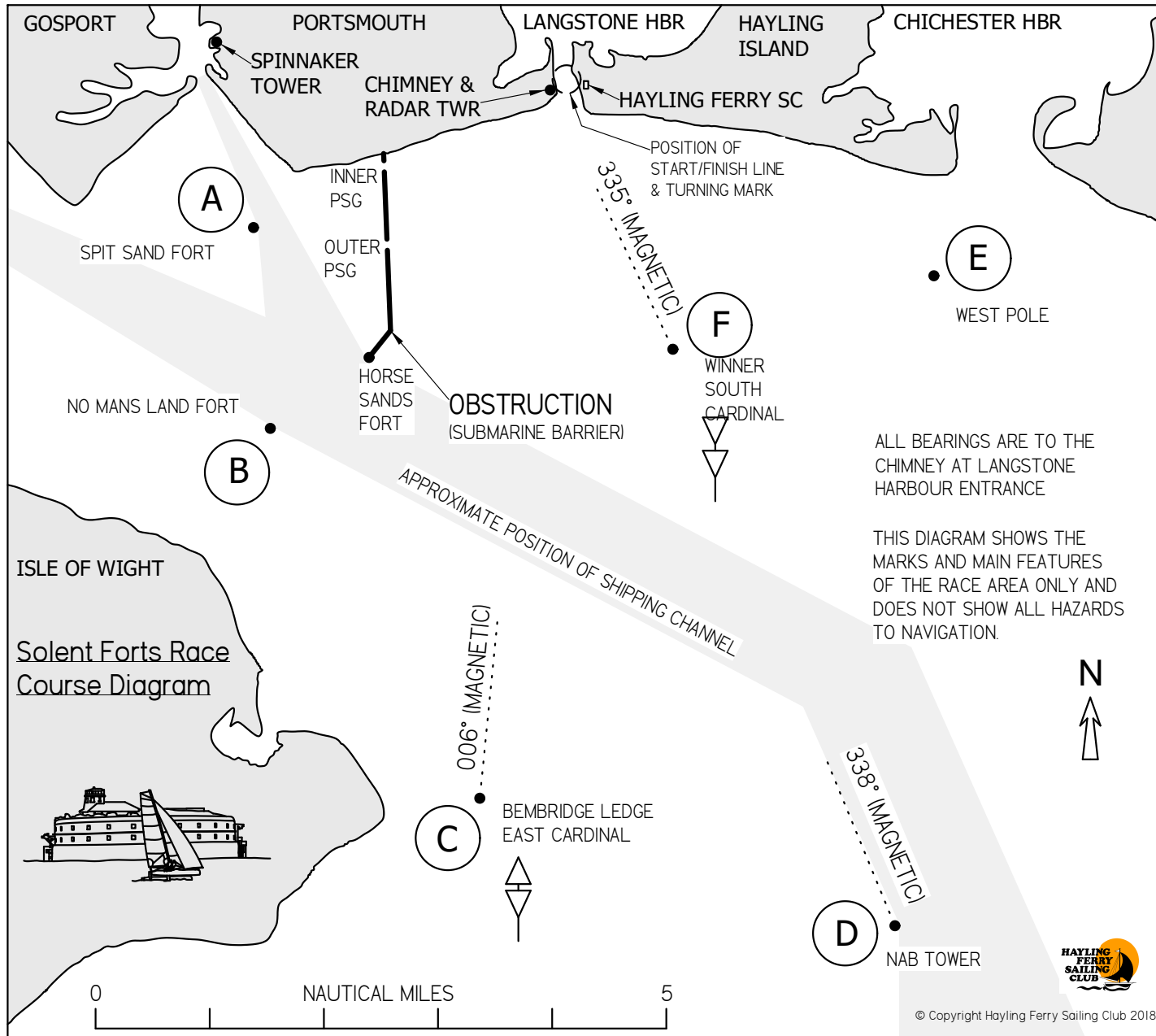


Solent Forts Race

Marks and Features

 = Point of interest and direction of picture





Course Diagram

Submarine Barrier (Obstruction)

Outer
Passage

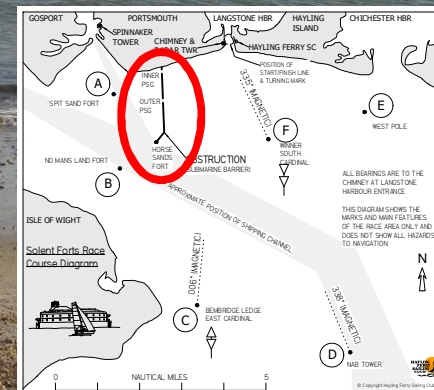
Inner
Passage



Yellow
marker
poles

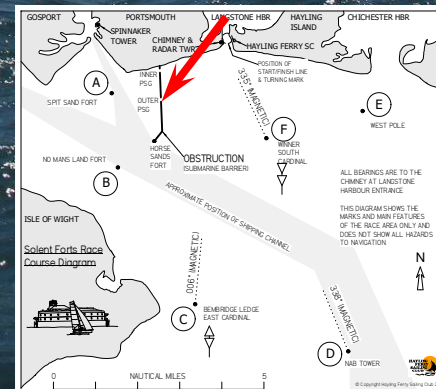
Photo taken at low tide from
Southsea Beach

Copyright © 2012 Hayling Ferry Sailing Club



Outer Passage

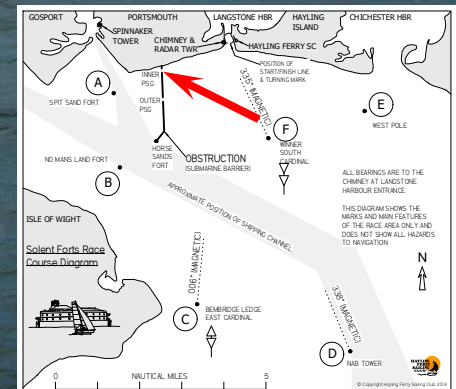
Picture taken at high tide, concrete blocks to either side of passage are underwater



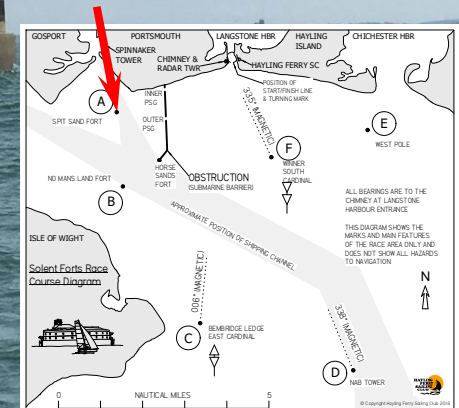
Inner Passage

Portsmouth (South Parade) Pier in background

Picture taken at high tide, concrete blocks to either side of passage are underwater

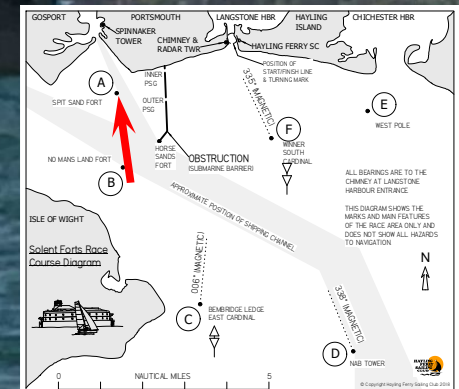


Mark **Alpha** - Spitbank Fort (landward side)

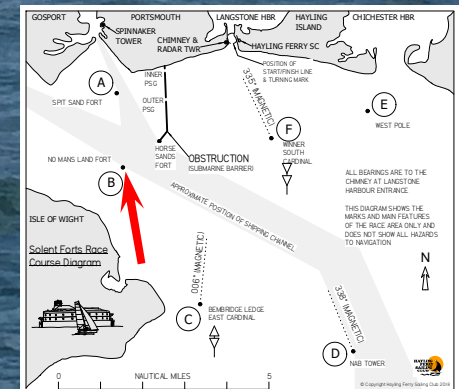


Mark **Alpha** - Spitbank Fort (seaward side)

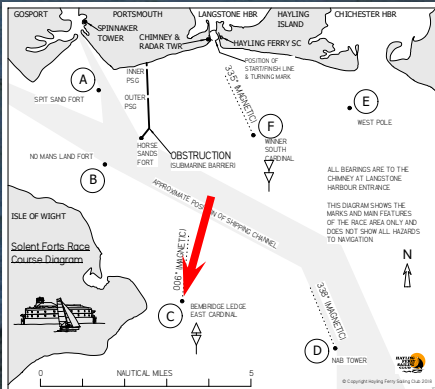
Spinnaker
Tower in
background



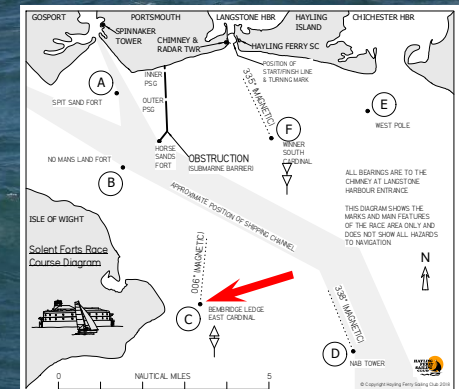
Mark **Bravo** – No Mans Land Fort Fort (seaward side)



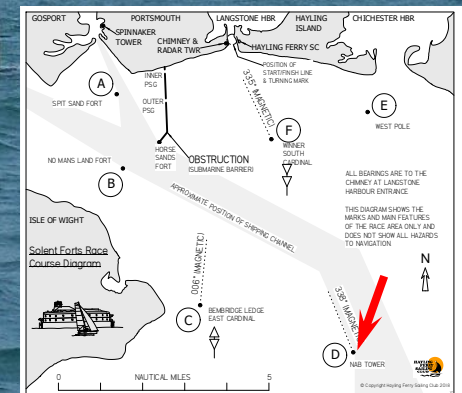
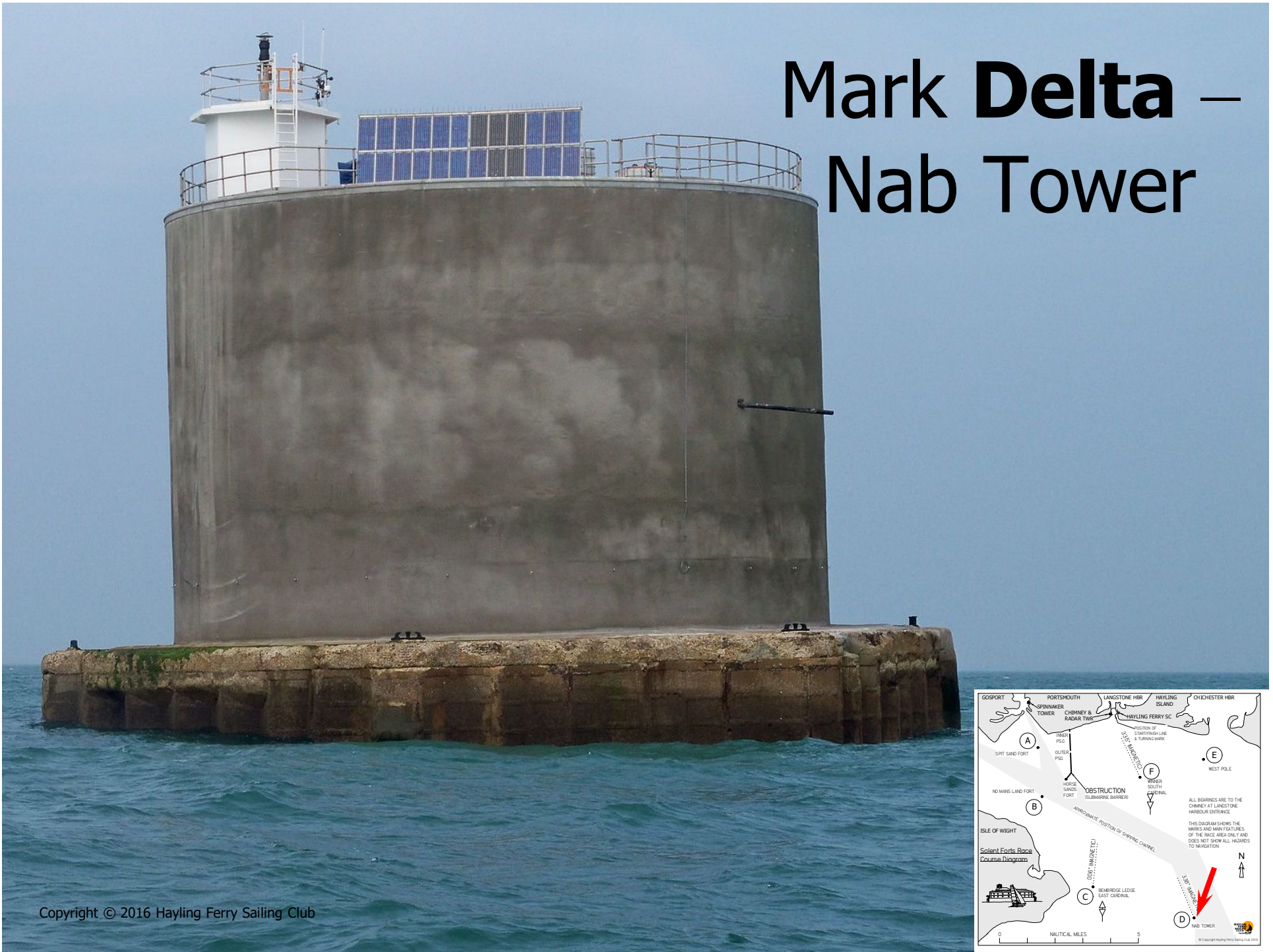
Approach to Mark **Charlie** – Bembridge Ledge (East Cardinal)



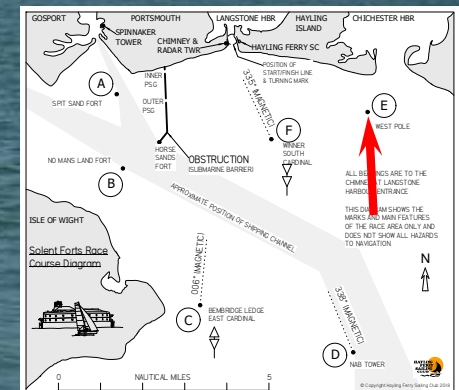
Mark Charlie – Bembridge Ledge (East Cardinal)



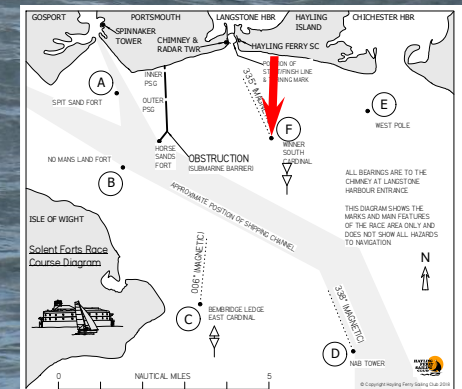
Mark Delta – Nab Tower



Mark Echo – West Pole



Mark **Foxtrot** – Winner (South Cardinal), landward side



Mark **Foxtrot** – Winner (South Cardinal), seaward side

Chimney at
Langstone
Harbour
Entrance

